

Doowon Common Rail testing equipment



www.torshizitrade.com

2. Product Introduction

MODEL: DWC-310 (Common Rail Injector Tester)

Injector test equipment for heavy commercial vehicle



Features

- Test applicable to Bosch, Delphi, Dense, Siemens, and Piezo
- Tests injectors for big trucks below 25Ton
- Tests uniformity for CRDI injector
- Monitors injection pattern
- Measures injection and leakage quantity
- 4 automatic memory channels
- Tests nozzle spray pattern
- Accurate rail pressure thanks to feedback of sensor
- Automatic cooling system
- Suitable for every Works- shop

Specification

Power supply	Single Phase AC 220V/50~60Hz
Size(mm)/weight	600(L)x600(D)x1430(H)/150kg
Working pressure(bar)	100~1350bar, up to 1600bar
High pressure	Formed by high pressure pump installed

2. Product Introduction



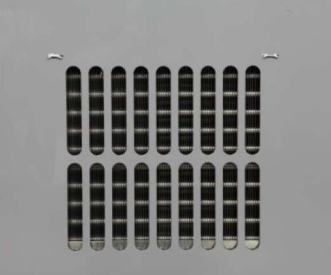
Control panel



with injector on



Injection and leakage quantity



Cooling System.

2. Product Introduction

2-2 .Common Rail Engine for Testing Equipment

MODEL: DWC-510

Injector test and cleaning equipment



Features

- Test applicable to Bosch, Delphi, Dense, Siemens, Euro-5 and Piezo Injector.
- Working Pressure: 1,350bar, Up to 1,650Bar(adjustable)
- Easy to operation with Touch screen.
- Tests 4 injector at same time.
- Tests uniformity for CRDI injector
- Monitors injection pattern
- Measures injection and leakage quantity
- 5 automatic memory channels
- injector cleaning function.
- Accurate rail pressure thanks to feedback of sensor
- Suitable for every Work shop

2. Product Introduction



Specification

Power supply	Single Phase AC 220V/50~ 60Hz
Dimension(mm)/weight	1000(L)X700(D)X1600(H)/200KG
Working pressure(bar)	100~1350bar, up to 1650bar
Motor	1HP (5:1 reduction gear motor)
High pressure	CRDI High pressure pump

2. Product Introduction

2-3 .Common Rail Engine for Testing Equipment

MODEL: DWC-710 (Common Rail Test System)

Specialized Common Rail test bench for Testing

- Consists of 2 units; injector tester and pump tester
- Tests all types of injectors, pumps, and common rail
- Simultaneously tests injectors and pump due to RESPECTIVE POWER SUPPLY

Injector test unit

- Test applicable to Bosch, Delphi, Denso, Siemens, Delphi Euro 5, and Piezo
- 12" TOUCH SCREEN use
- Checks 4 injectors at the same time
- Measures injection and leakage quantity
- Tests injectors in low/medium/high pressure and pilot
- Monitors injection pattern
- Variable voltage control
- Tests injectors for heavy commercial vehicle.
- Temperature performance due to automatic cooling system

Power supply	Single Phase AC 220/380V,/50~60Hz 1/5(2HP)4P inverter
Size(mm)/weight	1400(L)X760(D)X1600(H)/420KG
Working pressure(bar)	120~1850bar
Main injection	100~1200 μ s

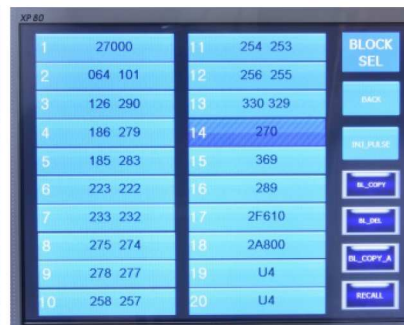
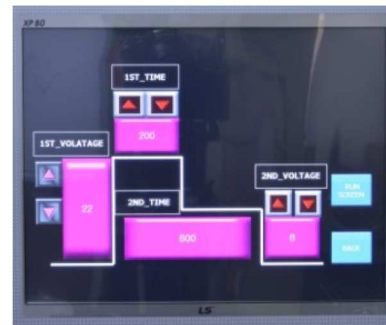
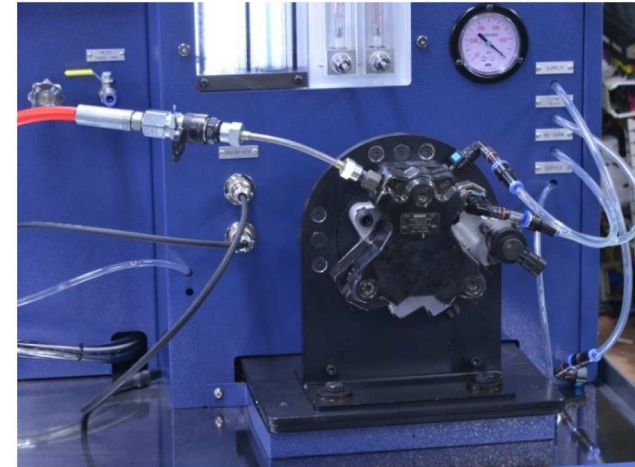


2. Product Introduction

Pump test unit

- Test applicable to Bosch (CP1, CP3), Delphi, Denso
- Measures pump output, discharge rate of valve (IMV, MP-ROP)
- Measures leakage quantity
- Tests high pressure maintenance power for each section
- Easy to repair pump with being installed on the stand

Power supply	Single Phase AC 220/380V, 1/5(2HP)4P
Working pressure	100~2500bar, according to pump
Duty range	According to pulse inside (by 1 μ s)
DRV range	0~100% (by 0.5%)



2. Product Introduction

2-3 .Common Rail Engine for Testing Equipment

MODEL: DWC-720 (Common Rail Test System)

Specialized Common Rail test bench for Testing

- Consists of 2 units; injector tester and pump tester.
- **Two-way measurement system: Glass beaker and Sensors**
- Tests all types of injectors, pumps, and common rail
- Simultaneously tests injectors and pump due to RESPECTIVE POWER SUPPLY

New production

Injector test unit

- Test applicable to Bosch, Delphi, Denso, Siemens, Delphi Euro 5, and Piezo.
- Checking injection and leakage quantity by two-way measurement system ; **Glass beaker and Sensors.**
(Total 8 sensors make the measurement more accurate and precise.)
- It is possible to check **Response time (RST)** of injectors. (Delphi/Denso)
- Operation system by manual and automatic.
- Test in automatic mode is completed within 3 minutes.
- Variable voltage control
- Tests injectors for heavy commercial vehicle.

Power supply	Single Phase AC 220/380V,/50~60Hz 1/5(2HP)4P inverter
Size(mm)/weight	1400(L)X760(D)X1600(H)/420KG
Working pressure(bar)	120~1850bar
Main injection	100~1200 μ s

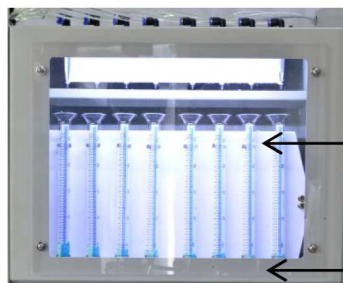
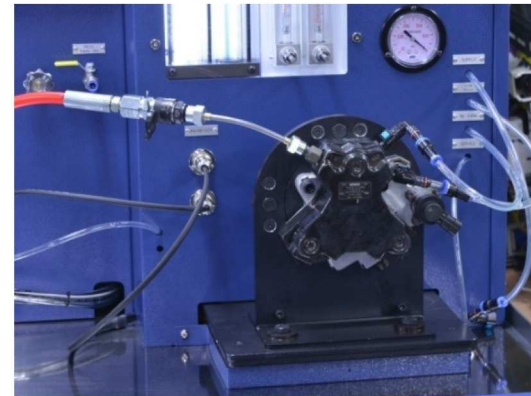


2. Product Introduction

Pump test unit

- Test applicable to Bosch(CP1, CP3), Delphi, Denso
- Measures pump output, discharge rate of valve (IMV, MP-ROP)
- Measures leakage quantity
- Tests high pressure maintenance power for each section
- Easy to repair pump with being installed on the stand

Power supply	Single Phase AC 220/380V, 1/5(2HP)4P
Working pressure	100~2500bar, according to pump
Duty range	According to pulse inside (by 1μs)
DRV range	0~100% (by 0.5%)



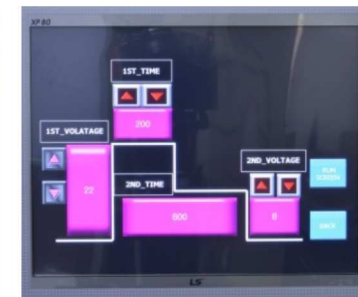
← Glass beaker

← Sensors

Two-way measurement system:
(Glass beaker and Sensors)



Automatic test mode



2. Product Introduction

2-1 .Common Rail Engine for Testing Equipment

DWC-830 Common Rail Test System

Common Rail injector and pump testing equipment

- Test injectors, high pressure pumps, and rails by two-way measurement system; flow sensors and Glass beaker.
- Consist of 3 parts; injector tester, high pressure pump tester, and controller



www.torshizitrade.com

2. Product Introduction

2-1 .Common Rail Engine for Testing Equipment

Features

- Tests all types of injectors, high pressure pumps, and common rails.
 - Test applicable to Bosch, Delphi, Denso, Siemens, including Euro5, Euro6, and Piezo type injectors
 - Tests 4 injectors of heavy commercial vehicles (DL06,DL08,DV11,IVECO) at the same time
 - Test applicable to Bosch(CP1,CP3,DL06,DL08,DV11), Delphi, Denso, Iveco, and Cummins low pressure pump
 - Tests pump output, discharge rate of valve(IMV, MP-ROP)
 - Easy to operate with 12"touch screen (possible to use a mouse for the convenience)
 - Checking injection and leakage quantity by two-way measurement system; cylinders and sensors.
- (Total 8 sensors make the measurement more accurate and precise.)
- It is possible to check Response time (RST) of the injectors (Delphi/Denso)
 - Operation system by manual and Automatic
 - Test in automatic mode is completed within 3 minutes.



Automatic test mode



Two-way measurement system; cylinders and sensors



Response time (RST) of the injectors (Delphi/Denso)

Specification

Power supply	AC3 /380V/5HP(controlled by inverter)
Size (mm)/Weight	2200(L)X800(D)X1600(H)/500KG
Working pressure	120 ~ 1,850bar
Main injection	100~1,200 μ s (adjustable by 1 μ s)

2. Product Introduction

2-1 .Common Rail Engine for Testing Equipment

MODEL: DWC-610S

High pressure pump testing equipment for both light and heavy commercial vehicle

Features

- Test DL06, DL08, DV11 series and low pressure pump for Iveco, Cummins
- Adjustable pulse, pressure, rpm
- Easy to install pump using quick couplings
- Ampere minutely adjustable by 0.001A
- Measures pump output and valve (IMV, MPR) output ; at start, idle (low pressure), and for each section
- Tests high pressure maintenance power
- Measures leakage quantity.

Measuring items

1. Pump output
 - at start, idle (low pressure), and for each section
2. Valve (IMV, MPR) output
 - at start, idle, and for each section
3. High pressure maintenance power for each section
4. Pulsation
5. Leakage quantity

Power supply	Single Phase AC 220V, 50~60Hz
Dimension (mm)	800(L)x730(D)x(800)1200(H)

